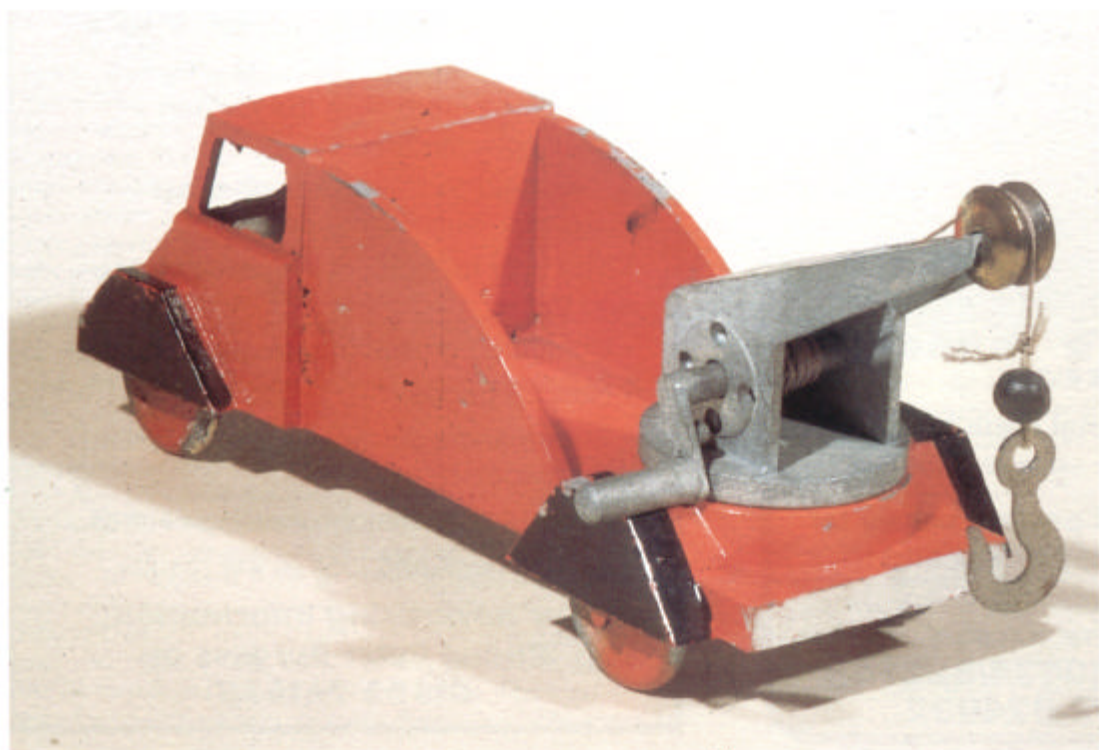
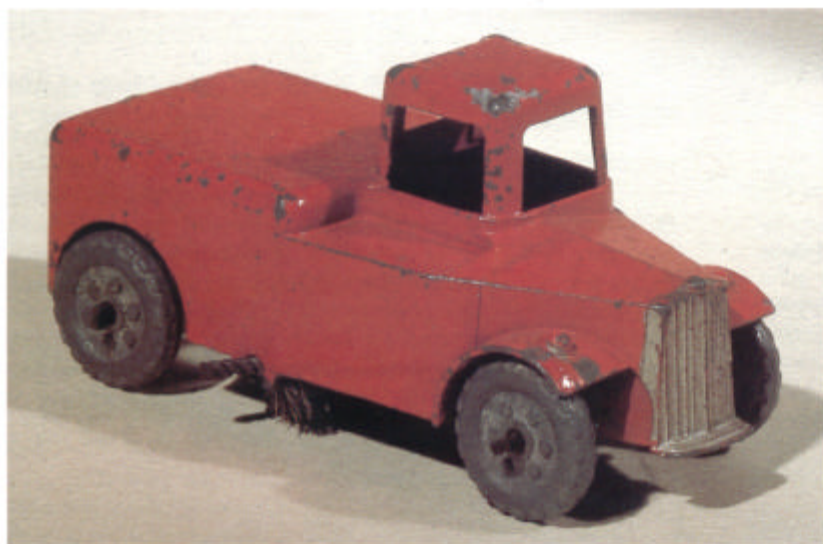


# Robert Newson's Favourite TOYS

In my last article (Classic Toys Issue 2) the address of Sundaw Products Ltd should be 1649 Bath Row, Birmingham and not as shown. This information came from the trade magazine Games & Toys where the incorporation of the company was reported, but the number 1649 seems odd and may itself be a misprint - Bath Row is not a very long road!

Our subject this time is another 1940's toy, but the manufacturer is unknown. It is a road sweeper with a left-hand drive half-cab, possibly a model of a Latil. The wire brush is mounted at an angle across the model and the wheels are a unique design, having six "wheel nuts" around the hub as well as a cast-



in tread pattern. A spare wheel is mounted at the rear using a self-taping screw through the body. Overall length is 97 mm. The example illustrated is painted red with silver trim on the radiator grille and sidelights, while a version also exists in light blue.

I have also seen this model with an unpainted half-base under the bonnet, extending back as far as the brush and including a hole to which a driver might be attached. The base was just a clip fit above the front axle which explains why it is missing more often than not.

There is no identification anywhere on the model, not even a "MADE IN ENGLAND" and there are no common features with any other toys that might give a clue as to the manufacturer. The model is hard to find, which is a shame as it is an unusual subject and quite nicely done compared with some crude contemporary toys. If any reader has one with a driver, please let me know via the Editor with a photograph if possible.

The breakdown truck is entirely fanciful and nothing like a real vehicle. I think the die must have been made by an apprentice toolmaker, because it is all straight lines and radiuses - he had not yet learned how to cut complex curves! The unpainted crane can rotate and the winding handle raises and lowers the hook. The pulley wheel at the top of the crane is turned brass, but on the example illustrated the hook is not original. Overall length (excluding the crane) is 102 mm. This one is painted orange with black mudguards and silver trim. It also exists in blue.

There is no identification cast on the model, but the simple metal wheels can be associated with the firm of S A Agasee Ltd, toy manufacturers of 12 Stamford Hill, Stoke Newington, London N16. This firm was incorporated as Agasee and Brooks Ltd in 1947 and changed its name to S A Agasee Ltd in 1948. S A Agasee was also listed in street directories at a different address as "Metal Moulds Manufacturer". The last directory entries were in 1952, suggesting that Agasee ceased trading due to the 1951-2 ban on the use of zinc in toy manufacture.

Both the road sweeper and the breakdown lorry are quite hard to find.

(ED: It's nice to have Robert back in the pages of Classic Toy and we hope to see many more of his favourite toys in future issues.)

